

Tellus 5 - Using JabblaIR with The Grid 2 and Grid 3 for Environmental Control

This guide provides information on setting up environmental control on the Tellus 5 for Grid 2 and Grid 3.

The environmental control unit contained in the Tellus 5 is called JabblaIR. JabblaIR works in a similar way to other environmental control modules in that it allows you to record and send infrared (IR) signals to control appliances such as televisions, DVD players and infra-red remote controlled toys. Recorded infrared signals can then be transmitted from the Tellus 5.

On the Tellus 5 the IR receiver is located on the front of the device in the top right hand corner. The IR receiver is where you will point the remote control that you are trying to record.



The Tellus 5 IR transmitter is located on the back of the device. Like all IR remote controls, this transmitter must have a direct line of sight to the device (e.g. TV) that you want to



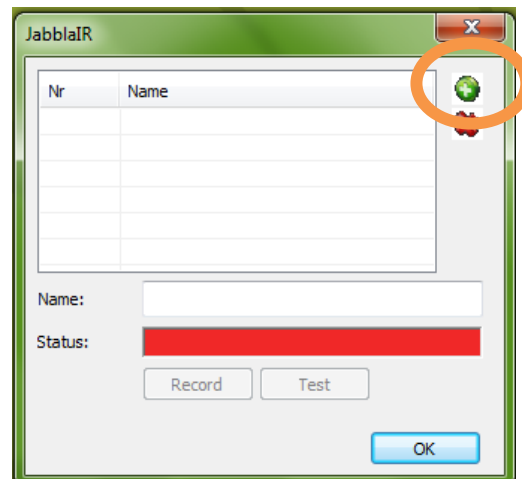
control.

When recording remote controls it is highly recommended to have brand new, good quality batteries installed in the remote control.

To record remote controls on the Tellus 5 for use with Grid software, a small program called JabblaIR Tool is used. The tool can be found on the desktop of the Tellus 5 or alternatively can be downloaded from Zytec's website.

To record a remote:

1. Open Jabbla IR Tool.
Select Run if asked by Windows.

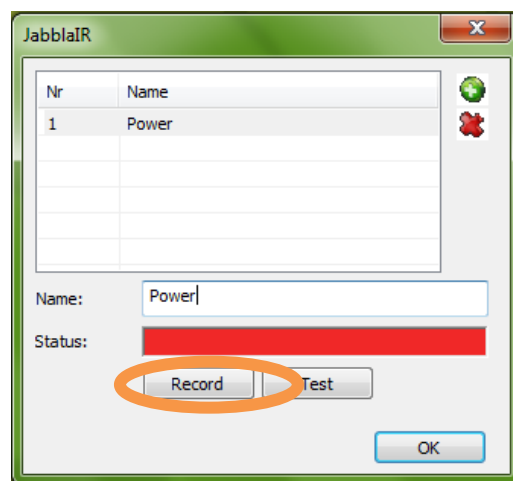


2. Select **Add New** (green + sign).

3. In the **Name** box type the name of the remote code being recorded.

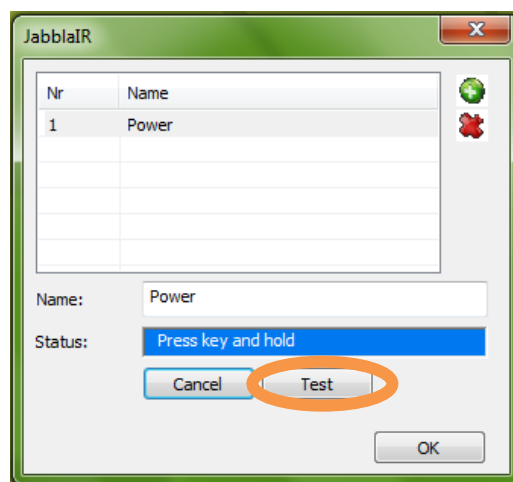
Be sure to be clear with the name so that you are able to easily identify which command has been recorded. E.g. TV Power. **It is also recommended that you also complete the IR record on the final page of the instructions.**

4. Once you have finished editing the name of the remote code select **Record**.



5. Point the remote control at the IR Receiver (on the front of the device) from approximately 15-20cm away and press the button on the remote that you want to record. Once you have successfully recorded the remote the **Status** display will say **OK** and turn green.

6. Press **Test** to check that the recording worked (make sure that the IR transmitter is facing the TV/DVD etc).



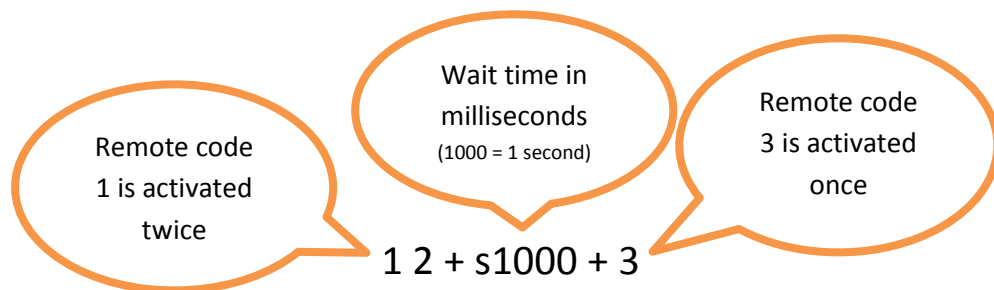


7. If the remote control is successful continue adding more controls by following steps 1-6.

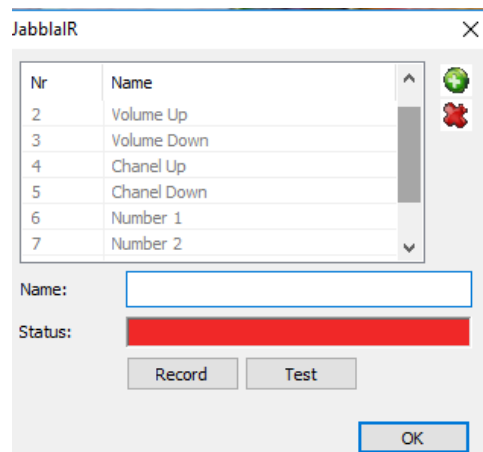
If the control doesn't test successfully try re-recording the control again.

To use a specific remote code that has been recorded in JabblIR you need to be able to create some different arguments. An argument is a small amount of text that tells the JabblIR tool which remote code to activate and how to activate it. JabblIR can use a single recorded remote button or a combination of buttons (eg. Chanel 24 is accessed via the number 2 and the number 4). This kind of remote activation where multiple buttons are automatically used is called a macro. Some macro commands will also require the use of a wait function for devices that require a gap between button presses.

An argument can contain the following types of remote activation:



Below are some examples of types of arguments that can be created. In these examples the recorded remote buttons were as pictured.





There are four types of arguments that may be used.

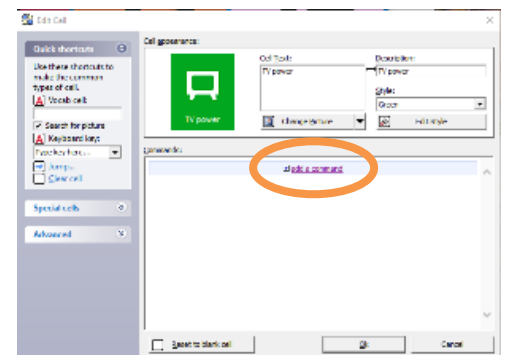
1. Simple argument – a single remote code is activated
 - In this case the argument is simply the number of the of the remote code in Jabbla IR.
 - Eg. The argument for Chanel Up to be activated once by itself is simply **4**.
2. Repeating argument – a single remote code is activated a number of times.
 - In this case a single remote button is pressed repeatedly.
 - Eg. The argument for Volume Up pressed 5 times is **2[space]5** Where the first number is the remote code to be activated and the second number is the times it is repeated.
3. Simple macro – a number of different buttons are pressed automatically.
 - In this case different buttons are pressed automatically, one after the other. This can be useful for changing to specific TV channels.
 - Eg. The argument for channel 12 would be **6 + 7** where the sixth IR command (Number 1 on remote) is pressed and then the seventh IR command (Number 2 on remote) is pressed immediately after.
4. Complex macro – multiple commands are pressed with wait times.
 - In this case multiple different buttons are pressed (some repeatedly) with additional wait times between remote presses.
 - Eg. The argument for changing the channel to 12 plus plus some wait time and then turning the volume up 5 times would be **6 + 7 + s1000 + 2[space]5**

Using Remote Control Commands with Grid 2

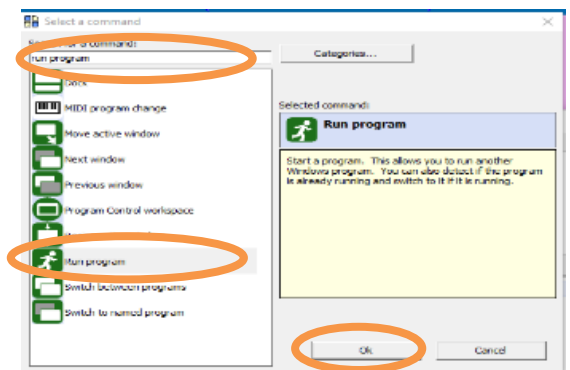
1. In editing mode select the cell that is going to have the environmental control command. Select **Edit cell**.



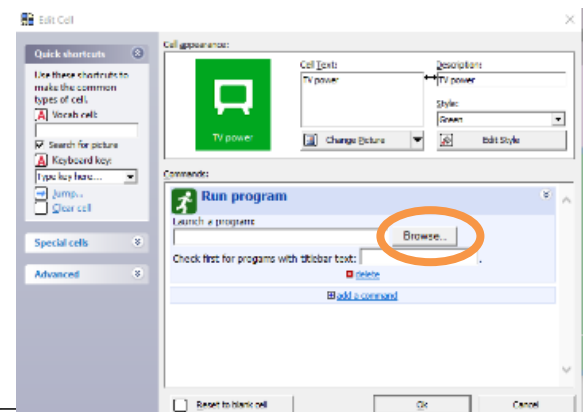
2. Select **add a command**.



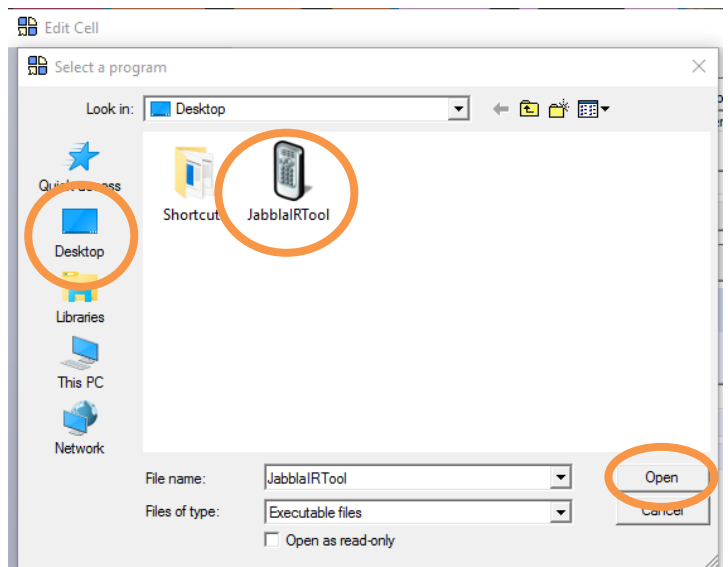
3. Search for **Run Program**. Select the command and then press **OK**.



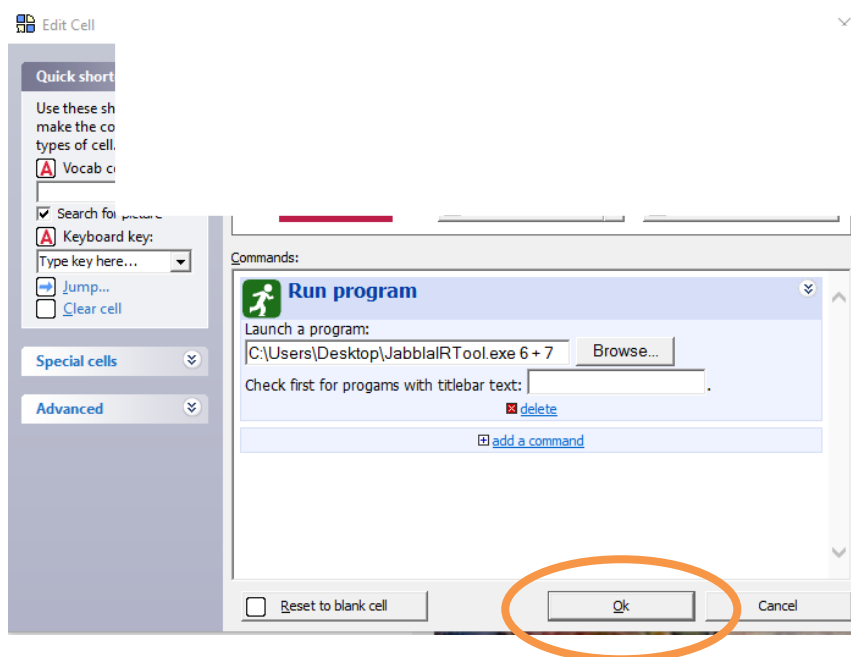
4. Select **Browse...**



5. Navigate to the **Desktop** and select **JabblaiR Tool**. Select **Open**.



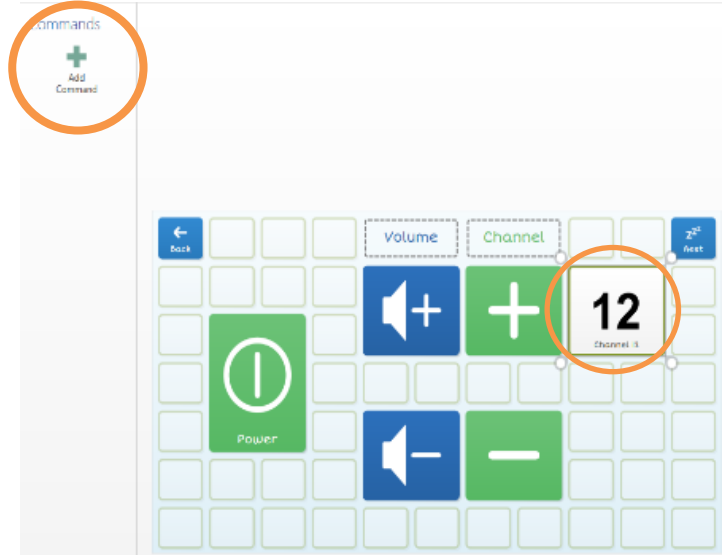
6. In the text field scroll using the right arrow on the keyboard to the end of the line.
7. At the end of the line type a single SPACE and then type the argument.
Eg. From the previous example where the argument to change the TV channel to 12 would be **6 + 7** the line of text would look like:
`C:\Users\Desktop\JabblaiRTool.exe 6 + 7`



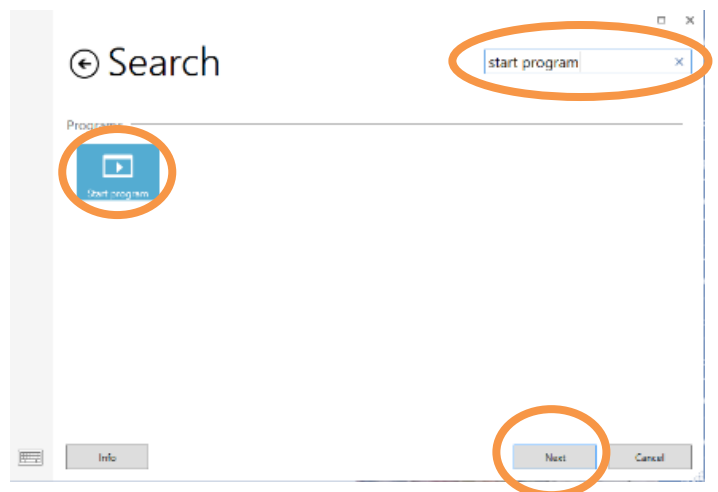
8. Select **OK**.

Using Remote Control Commands with Grid 3:

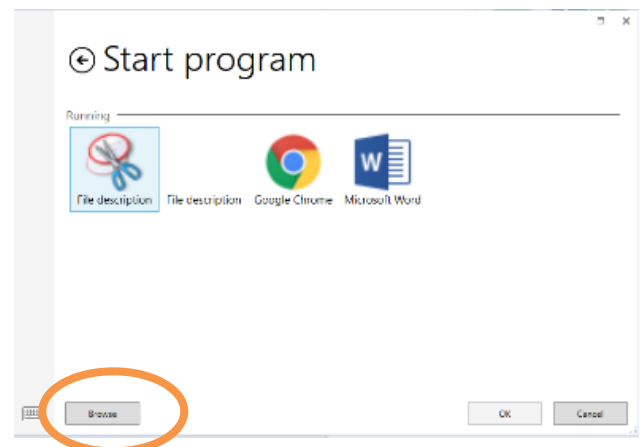
1. In editing mode select the cell that is going to have the environmental control command. Select **Add Command**



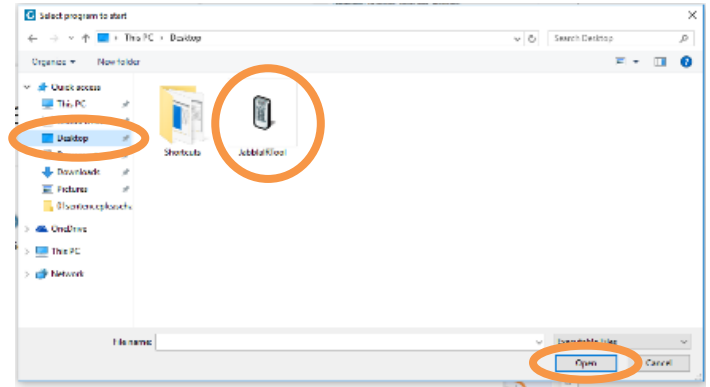
2. Search for **Start Program**. Select the command and then select **Next**.



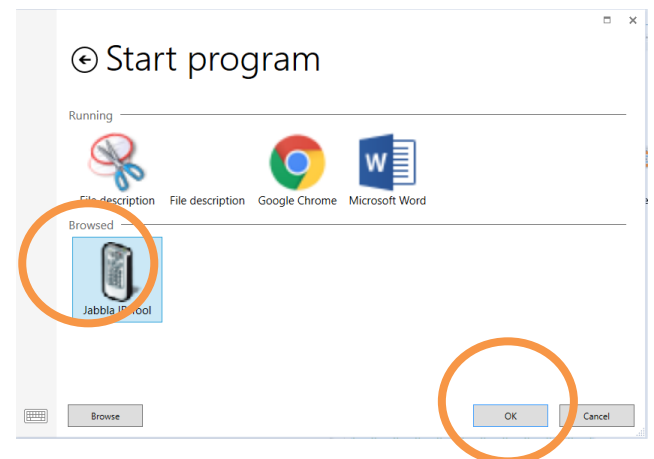
3. Select **Browse**.



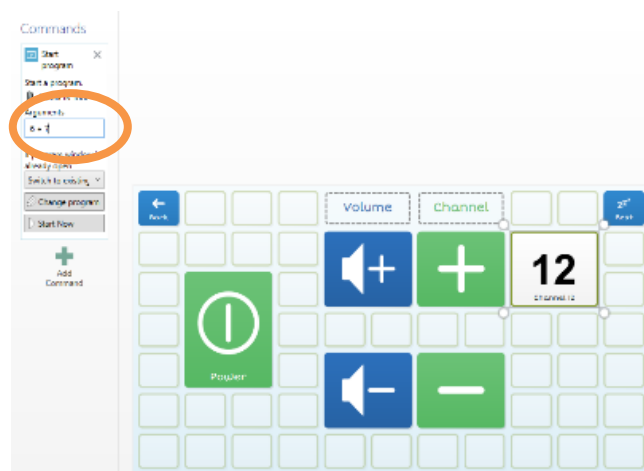
4. Navigate to the **Desktop** and select **JabblaiR Tool**. Select **Open**.



5. Select **Jabblai IR Tool** and then select **OK**



6. In the **Arguments** box type the argument. Eg. From the previous example where the argument to change the TV channel to 12 would be **6 + 7** the command would look like:





7. Once you have completed editing exit editing mode and save the grid set.

Recording List

[illegible]