

# Smartbox



Brainfingers Access

## Contents

Installing the Brainfingers Access Software .....	3
Licencing.....	3
Brainfingers Hardware .....	4
Brainfingers Software – Quick Start .....	4
Balance Check .....	4
Review Profile .....	5
Switch Adjustment .....	6
Setting up in Grid 3 .....	7
Cleaning.....	8
Replacing Sensors .....	8
Further Settings.....	8

## Installing the Brainfingers Access Software

The Brainfingers software will allow you to configure and set up the Brainfingers headband for use. Before continuing, install the software from the memory stick or the latest version can be downloaded from <http://www.brainfingers.com/ba70.htm>

Once the software is installed, depending on your computer set up you may need to set it to run as Administrator. This can be done by right clicking on the software icon – Properties – Compatibility – Change Settings for all Users – tick the box for 'Run this program as an Administrator.'

## Licensing

The software will run on a machine for a 30 day demo, to licence it after purchase, this is done from the Brainfingers software. In the software, click the button for Licence (top right) it will tell you how many days are left and gives you the option to Activate.

For Activation, you need the last 5 digits of the Amplifier Serial Number and the Hardware ID. The serial number is found on the bottom on the Amplifier, an example is below:



Send the last 5 digits and the Hardware Serial Number, found from the Licence screen, to [support@thinksmartbox.com](mailto:support@thinksmartbox.com) we will then find out the licence and send it to you.



## Brainfingers Hardware

The hardware consists of:

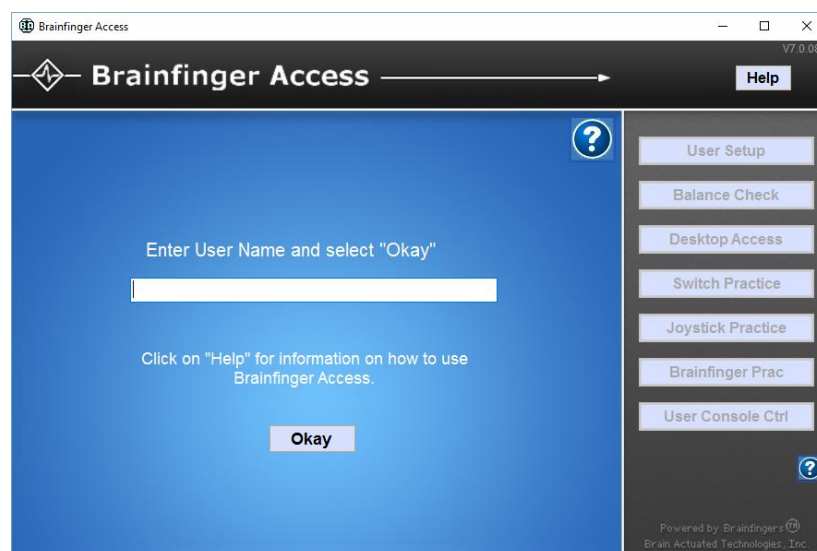
- Brainfingers headband
- Amplifier
- USB Cable

The headband is made up of 6 sensors, they have a shiny side which faces out and the dull grey side which presses against the forehead. The thick wire needs to run down the left hand side of the head and the headband is adjustable by using the clamp on the thick wire for large adjustment and the cord with the cord stop for the fine adjustment.

Once the headband has been put on it should be placed in the middle of the forehead and make sure the sensors are touching the forehead. It can then be plugged in to the Amplifier, which is connected via a USB cable to the computer.

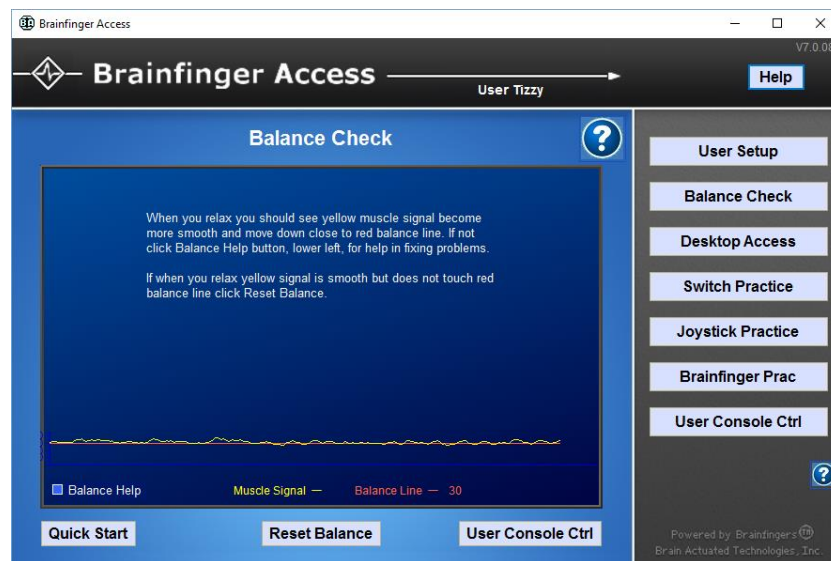
## Brainfingers Software – Quick Start

Launch the Brainfingers Access software, the first screen will ask you to choose a profile or you can add a name for a new profile.



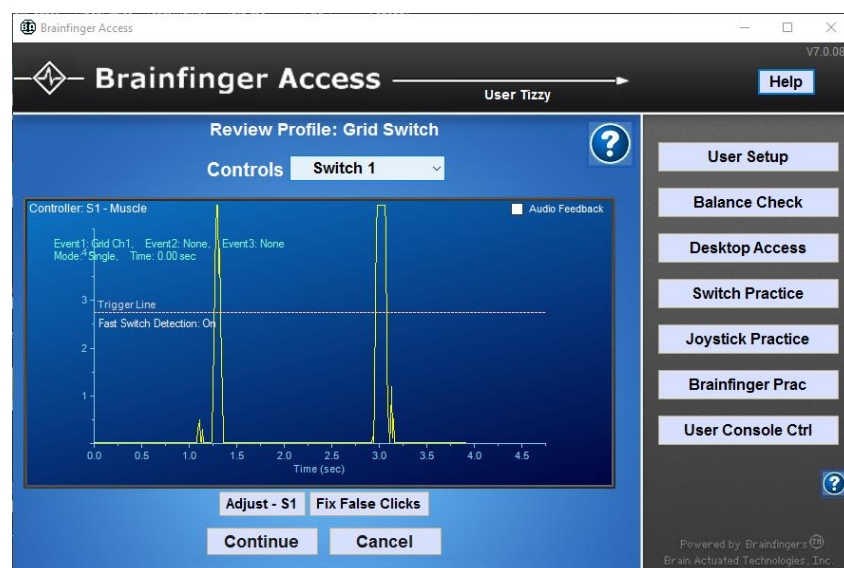
## Balance Check

This screen shows your muscle signal (yellow line), try to relax and the muscle signal line should go near the red balance line. If your yellow line does not reach the balance line you can press the Reset Balance to adjust the signal to you.



Once you have done the Balance Check, press Desktop Access and select the Grid Switch Profile and press Launch Profile.

## Review Profile



From here you can review the profile. This screen will show the muscle signal (yellow line) and you will also see that there is a Trigger line. When you carry out a muscle action (e.g. eyebrow raise, swallow, clenching teeth together etc) this needs to get above the Trigger line so that it can activate the switch press.

## Switch Adjustment

From this screen you can adjust the settings with the Switch Adjustment button (Adjust – S1) if necessary.

Adjust for User Tizzy

**S1 - Muscle** ?

**Switch Adjust**

Shift	Magnify	Smooth
0.00	1.0	0.00
Right	More	More
Left	Less	Less

Defaults Apply Cancel

Advanced Adjust

These options allows you to

- Shift – Move your muscle signal line in relation to the Trigger line, this can be used if your muscle action is only very small.
- Magnify – Adjust the muscle signal so that it requires less effort.
- Smooth – This will smooth and flatten out the muscle signal, it will also allow the Brainfingers to respond slower.

Once you have reviewed the profile, you can then press Continue. These settings can be left as standard, though you may wish to turn off the audible sound the Brainfingers makes when you go over the trigger line. Otherwise press Launch again.

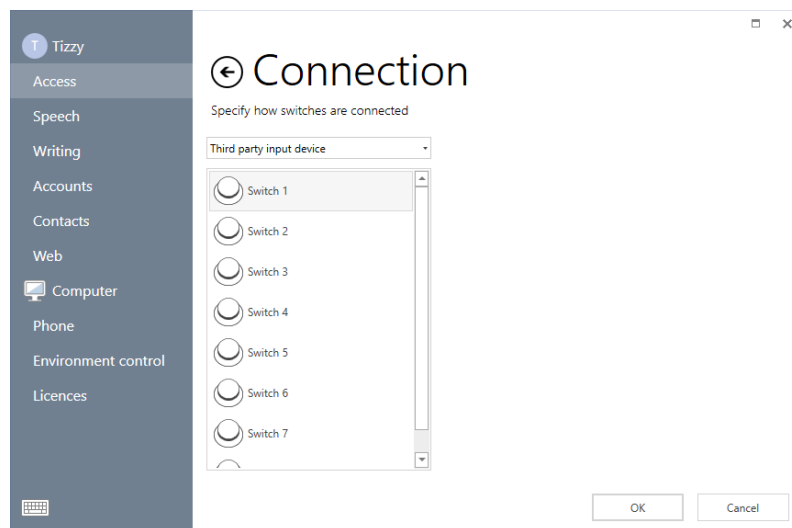
The Brainfingers screen will now shrink down to a small box which shows your control window. You can now start Grid 3 and set it up for using it with the Brainfingers software.

## Setting up in Grid 3

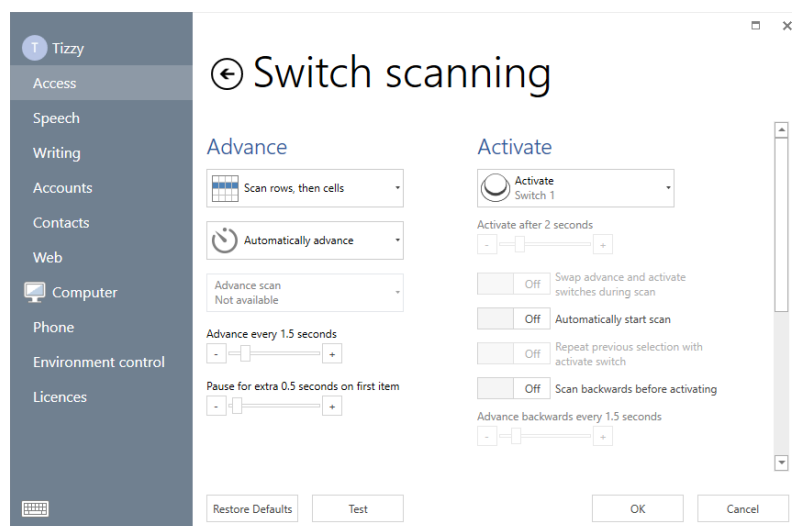
If you have not got Grid 3 installed this can be done from our Online Installer:

<https://thinksmartbox.com/product/grid-3/>

With the Brainfingers software running, Grid 3 can be set up for switch access. To set this up, go to the Menu bar – Settings – Access – Switches – Connection. It needs to be set to Third Party Input device.



Once selected under Switches go to Activation, on this Switch Scanning screen you can set up the scan pattern and timing for the switch scan. When you have finished setting it all up, it can be tested from the Test button at the bottom of the screen.



On the test page when you make your muscle action you should hear the beep (unless turned off) from the Brainfingers software and also see it scanning. Once tested you can then press OK, Grid 3 will now be set up for using the Brainfingers.



## Cleaning

The Brainfingers headband and sensors can be cleaned by using an Alcohol wipe.

## Replacing Sensors

The sensors on the headband usually need to be replaced between 4 – 7 months. The sensors just snap on to the back of the headband and can be replaced by gently snapping off the sensor and then pushing on a new one. The picture of this is below.



## Further Settings

To further adjust the Brainfingers software, to make extra settings changes, also take a look at the Brainfingers Access Help file which can be found in the top right hand corner when the software is open.