



Tellus 4 Intelligaze Quick Start guide

(Including Grid 2 and Look to Learn)

There are a number of steps that you may need to undertake in order to use the Alea Intelligaze camera on the Tellus 4.


Depending on whether the default settings are suitable for you, some or all of these actions may be optional.

- 1. Configure the camera**
- 2. Configure The Grid 2 and Look to Learn**
- 3. Adjust any settings required and calibrate the camera for first use**
- 4. Positioning and calibration hints.**

Each of these steps is outlined in detail in other guides. If you have any questions at all please feel free to contact Zytech. We are more than happy to help you with the set up process and during your loan.



Step 2: Configure the camera.

You should have the following icon on your desktop. 

To open the IntelliGaze software double click on this icon. Once the software is running you will be able to use the IntelliGaze camera to control the mouse. If you would still like to use the mouse and keyboard you can “pause” the camera by pressing the “PAUSE” key on the included keyboard.

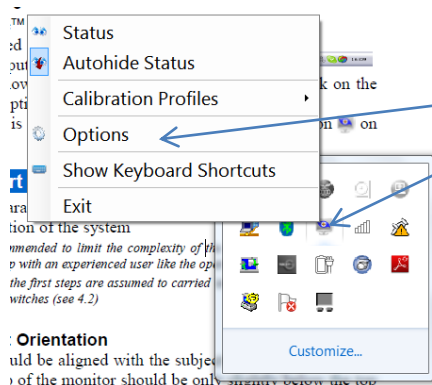
There are two main components to the IntelliGaze Software.

IntelliGaze [IG] v.3.0

IntelliGaze can be seen as a mouse replacement software application. It uses the Alea IntelliGaze camera system to acquire images of the user and calculates the actual gaze from the eye images. For most operations a new user generally needs to be calibrated to the system, before the gaze control can be used. The gaze tracking and 'click' control can be adapted to the user requirements and the target application.

Application Center [AC] (including Desktop 2.0)

The Application Center acts as a configurable Home-Page to the eye gaze controlled PC. It provides one-look start-up of applications and Windows desktop access with desktop 2.0 for advanced users. The Application Center also provides off-screen accessible areas, which control the mouse behaviour and allow the adjustment of several system settings.



Once the IntelliGaze program is running, right-click the IntelliGaze icon in the Windows desktop tray and select options to adjust the settings. (If you are in the Application Center select either windows or desktop 2.0 in the top right hand corner to get back to the windows desktop.)

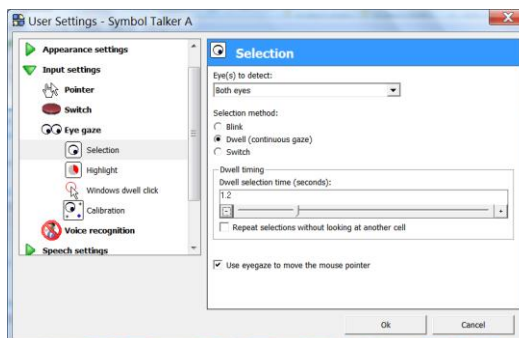
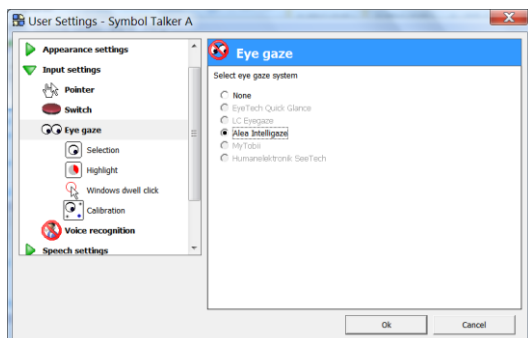
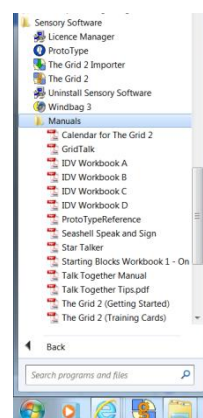
Here you can adjust a number of settings related to the camera's operation –calibration, dwell time, specific settings for various applications. It is a good idea to familiarise yourself with these settings by referring to pages 32-51 in the Manual. The manual can be downloaded from our website but is also included on the Tellus 4.

Step 4: The Grid 2 and Look to learn.

For more details regarding programming The Grid 2 please refer to the manual and quick start guides.

You can find the manual and help videos on the windows desktop or either in the start menu (see picture at left) or under help on The Grid 2 toolbar. The Grid 2 includes manuals both for the program itself and also for more commonly used grid sets e.g. PODD, Talk Together etc.

Any settings related to using the Intelligaze camera with The Grid 2 can be found in user settings. Open the grid set that you intend on using and on the toolbar select Edit → User settings. Then select input settings → eye-gaze. Ensure that Intelligaze is selected. You are then able to alter the settings to accommodate the eye-gaze user. You can calibrate the

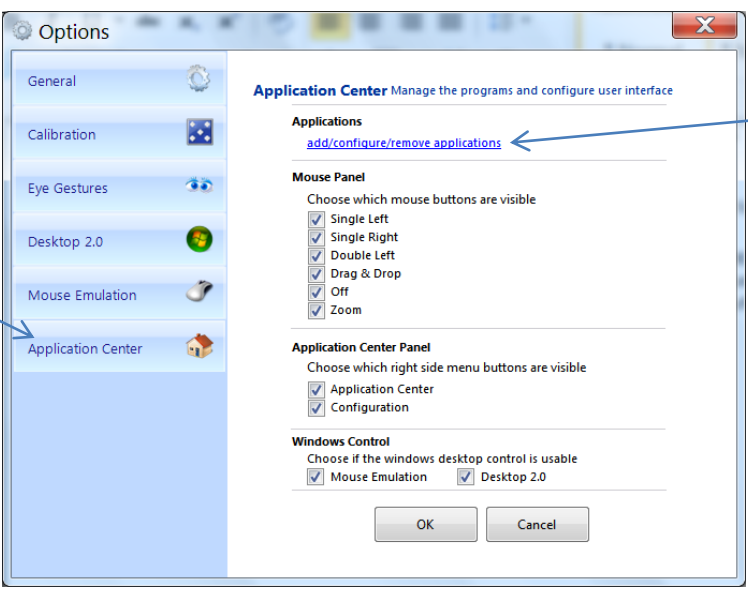


Step 3: Adjust Intelligaze settings

(Including for Look to Learn)

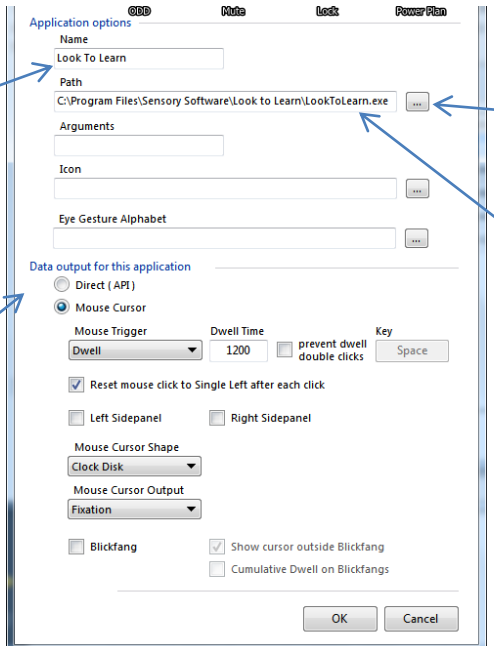
The Intelligaze software allows for the user to assign individual parameters for different programs.

A program that benefits from this function is Look to Learn. For these settings to work within the program you will first need to add a shortcut for Look to Learn to the application desktop and adjust the settings for look to learn. You will also need to start the Look to Learn software from the application centre to enable these settings.



1. Select Application Center

2. Select 'add/configure/remove applications'



3. Type Look to Learn under name

4. Select the button with the three dots and browse to find the look to learn software.

5. Follow the path hereto find the Look to learn program.

6. Adjust the rest of the settings in the lower half of the screen to match those in the picture at right.
Select OK.



Step 4: Positioning and calibration.

Correct positioning is critical for accurate use of any eye-gaze technology. For optimal use of the Intelligaze camera the following positioning guide should be taken into account:

- The person's face should be approximately 60 centimetres away from the monitor screen
- The person's face should be at the same angle and parallel to the monitor – i.e. if the user is reclined then the monitor should be angled so that the screen remains parallel to their face
- Refer to the diagrams and instructions on the quick start guide for more information
- You can use the status monitor to assist with positioning. To show the status monitor press CTRL + F1 on the keyboard or Right- Click the desktop tray icon and select Status. Good positioning has been achieved when you can see both eyes and a medium sized green face in the status monitor.

To calibrate for the first time press **CTRL + F5** and look at each red dot until it disappears. Refer to page 46 of the manual for more information. For a beginning user who using software such Look to Learn it is not always necessary to calibrate, instead, they can operate the camera off a good calibration from a support person.