

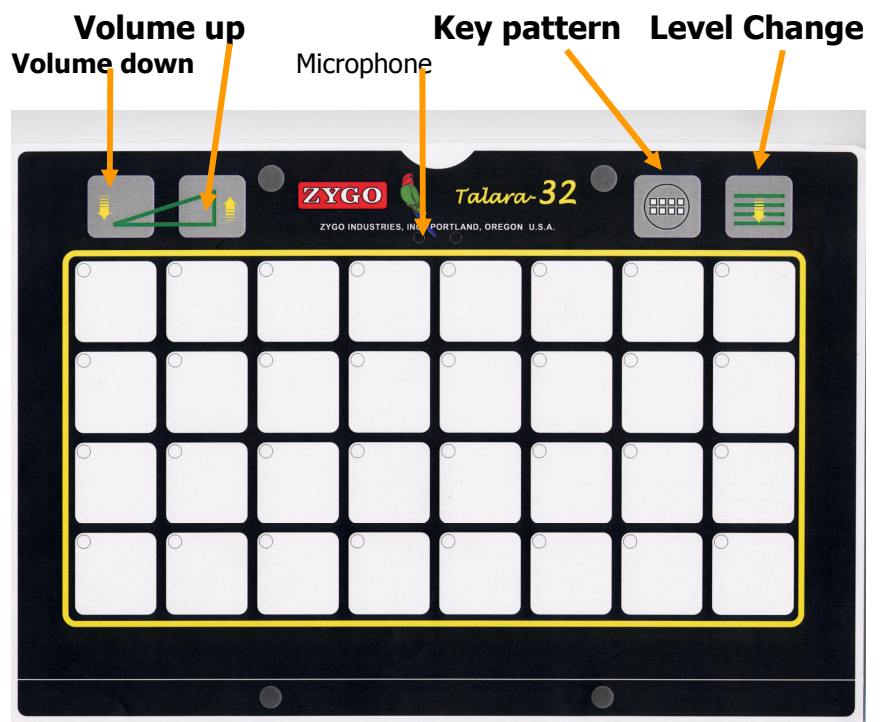
# Talara

## Functions

- The Talara is a portable electronic communication device.
- The messages need to be stored in the Talara.
- This tutorial provides instructions for recording messages and setting up the Talara ready for use.
- A primary aspect of successful Talara use is selection of messages suitable for the user. This will not be covered in this tutorial.

### Function Keys

The FUNCTION KEYS are located along the top row of the Talara keyboard.



### Message Keys

The MESSAGE KEYS are the white squares on the keyboard. The Talara has 32 keys arranged in 4 rows, each with 8 keys.

### Record/PLAY Switch



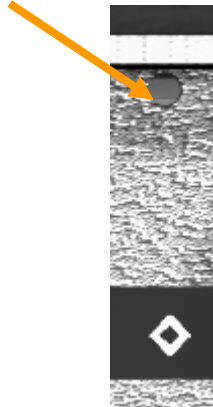
The RECORD/PLAY Switch is located behind the keyboard on the left. It is a small switch that is moved between Play and Record. Use a pen to move the switch easily.

The switch is specifically designed so that it cannot be moved accidentally. The microphone position is for RECORD; the speaker icon indicates PLAY.

# Recording a Level

**First ...**

**Erase all**



## ERASE ALL MESSAGES

A recessed push-button may be used to ERASE ALL MESSAGES. Once erased, the messages cannot be retrieved.

The button is on the left of the Talara behind the keyboard – denoted by a ◇. It is a recessed button above the diamond icon. You will need a straightened paper clip to access the button.

1. Switch to RECORD Mode.
2. Use a toothpick, bent paper clip, or other small probe to press the ERASE ALL MESSAGES button.
3. Press the button for at least 3 seconds. The Record/Play LED will blink to confirm the erasure.
4. Switch to PLAY Mode.
5. All the vocabulary/recordings will be CLEARed and the operating parameters will be as set by the factory.

## Large Keys

1. The Talara-32 can be set to any of six (6) Message Key patterns:
- 2.
3. Switch to RECORD Mode.
4. Press the KEY PATTERN Function Key to see the present KEY PATTERN. (The Message Key LEDs illuminate to display the KEY PATTERN.)
5. Press and release the KEY PATTERN Function Key again to change the KEY PATTERN.
6. Repeat to cycle through the KEY PATTERNS.
7. Stop on the KEY PATTERN wanted, which is the 8 locations.
8. Return to PLAY mode

## Setting up a level

- Find overlay 1 for kids in the class'
- You will notice it has 8 large squares, not 32.



- Here you will make the large square key-pattern and record the messages. All overlays on the Talara must have the same key pattern.
- Press the level key repeatedly until key 1 is illuminated. You are on level 1.

## Record Messages

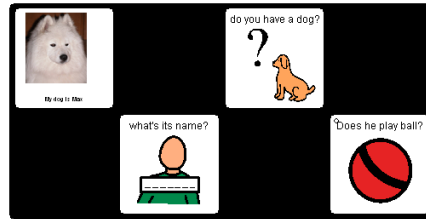
The microphone is located in the middle just above the top row of message keys. When using overlays, don't cover the microphone while recording. Also take care not to move the overlay around over the microphone while recording. The microphone is very sensitive and will pick up this extraneous noise.

1. Using overlay 1 for the kids in the class
2. Switch to RECORD mode (move the RECORD/PLAY switch on the left of the unit, to the microphone.
3. Press Message Key 1 and say "Jason"
4. Press the relevant key for "Sam" etc. Record all the names.
5. Switch to PLAY and test your message

# Making Another Level

## Setting up a new level

1. Find overlay 2 with the dog picture on key 1.



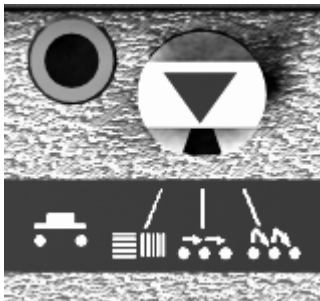
2. Press the level key repeatedly until key 2 is illuminated. You are on level 2.

## Record Messages

1. Using overlay 2 for the 'dog' conversation
2. Switch to RECORD mode (move the RECORD/PLAY switch on the left of the unit, to the microphone).
3. Press Message Key 1 and say "This is my dog Max."
4. Press the relevant key for "Do you have a dog?" etc.
5. Record all keys
6. Switch to PLAY and try your messages

Notice that we only have 4 messages, so the overlay is simplified while using a 8 location key pattern.

## Try Scanning



1. Plug a switch into the switch jack on the left side of the unit. There is only one jack – so you can't go wrong. It is right next to the RECORD/PLAY switch.
2. The scanning mode is selected by rotating the grey dial next to the switch jack. Try them. The first icon indicate row/column scanning; the second is step scanning and the third icon is for automatic linear scanning. The scan speed is adjusted using the white dial with the -/+".

