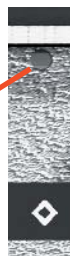


ERASE ALL MESSAGES

A recessed push-button may be used to ERASE ALL MESSAGES. Once erased, the messages cannot be retrieved.

1. Switch to RECORD Mode.
2. Use a toothpick, bent paper clip, or other small probe to press the ERASE ALL MESSAGES button.
3. Press the button for at least 3 seconds. The Record/Play LED will blink to confirm the erasure.
4. Switch to PLAY Mode.

ERASE ALL



Changing BATTERIES

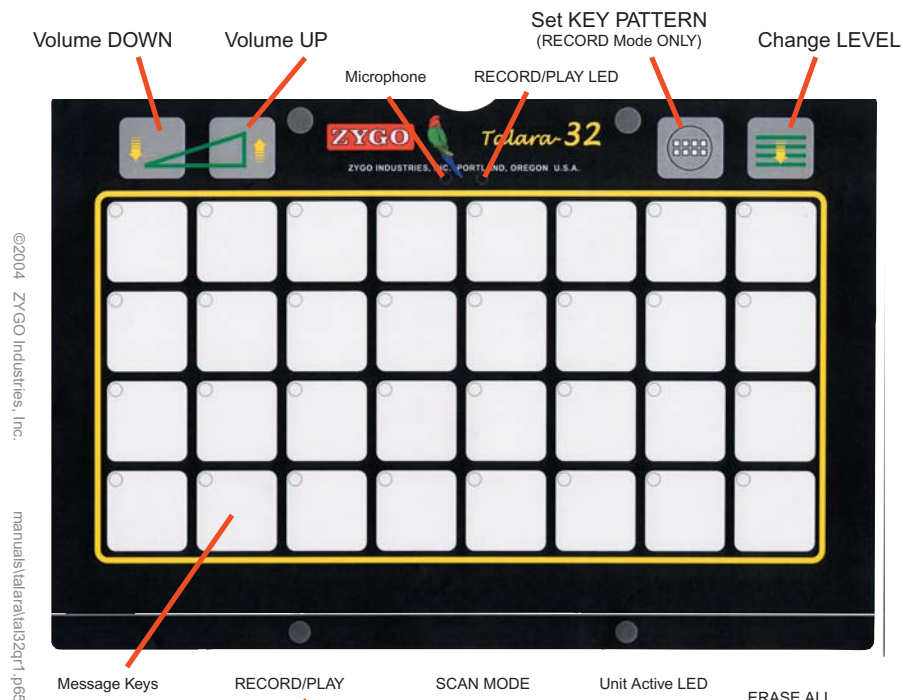
The battery compartment contains four (4) Alkaline AA cells. The battery drawer is easily removed.

1. Press the tabs on the Battery Drawer towards the center and pull out the Battery Drawer.
2. Remove the batteries and replace them. Be sure to insert the batteries in the proper direction as shown in the inside of the Battery Drawer.
3. Verify that both tabs are securely latched when the Battery Drawer is installed.



Talara-32

Operation Manual



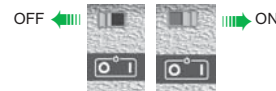
©2004 ZYGO Industries, Inc.

manuals\Talara\Talaria32qr1.p65

040129 Printed in U.S.A.

Turn the Power ON

Slide the Power ON/OFF switch to the ON position.



It is not necessary to turn off the Talara-32 unless it is to be unused for a long time. All recordings will be saved regardless of whether the power is on or off, or whether or not there are charged batteries in the unit.

1. Switch to RECORD Mode.
2. Press and hold any of the Message Keys and, while the RECORD/PLAY LED is lighted, speak into the microphone.
3. Switch to PLAY Mode.
4. Press the Message Key to hear the recording.



Recording and Playback

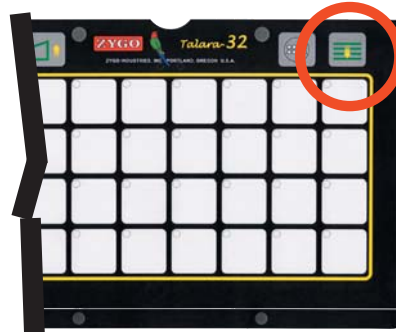
Re-recording

Messages may be re-recorded at any time.

Selecting and Recording in LEVELS

The LEVEL Function Key shows the present LEVEL and is used to change LEVELS. The four (4) top-left Message Key LEDs are used to indicate the LEVELS.

1. Press and release the LEVEL Function Key to see the present LEVEL. While the LEVEL LED is lighted...
2. Press and release the LEVEL Function Key to change to the next LEVEL.
3. Repeat to circulate through the LEVELS.
4. Stop on the LEVEL wanted.



Setting Output VOLUME

There are two (2) VOLUME Function Keys—UP and DOWN. The eight (8) top Message Key LEDs are used to indicate the LEVELS. The left-most Message Key is zero (0) VOLUME, the right-most Message Key is maximum VOLUME.

1. Press and release either VOLUME Function Key to see the present setting. While the VOLUME LED is lighted...
2. Press and release either VOLUME Function Key to change the VOLUME.
3. Stop on the VOLUME wanted.



Setting Message KEY PATTERN

The Talara-32 can be set to any of six (6) Message Key patterns: 32-Key, 16-Key, 8-Key, 4-Vertical Keys, 4-Horizontal Keys (2 x 2), and 2-Key. The KEY PATTERN Function Key is only usable in RECORD Mode.

1. Switch to RECORD Mode.
2. Press the KEY PATTERN Function Key to see the present KEY PATTERN. (The Message Key LEDs illuminate to display the KEY PATTERN.)
3. Press and release the KEY PATTERN Function Key again to change the KEY PATTERN.
4. Repeat to circulate through the KEY PATTERNS.
5. Stop on the KEY PATTERN wanted.
6. Switch to PLAY Mode.



Messages in the upper-left corner of the Enlarged KEY PATTERNS will be distributed throughout each ENLARGED KEY.

SCANNING

Three (3) single-switch SCAN Modes are provided in the Talara-32: MANUAL Linear Step and Directed, AUTOMATIC Linear, and ROW/ COLUMN. The SCAN Mode is selected with a rotary switch. Disable scan by setting the switch to any unlabeled position.

SCAN Speed for MANUAL Directed and AUTOMATIC scanning is set by a rotary control. Entry Delay Time is set automatically.

1. Set the SCAN Mode.
2. Plug in and activate a switch.
3. Set the SCAN Speed as needed.

MANUAL LINEAR SCAN

Step Scan

Each activation of the switch will move the Message Key LED to the next key. The pattern is left-to-right, top-to-bottom. When released, the message will be spoken after the Delay Time has passed.

Directed Scan

Holding the switch closed will cause the Message Key LEDs to scan left-to-right, top-to-bottom. When released, the message will be spoken after the Delay Time.

Activating the switch during the Delay Time period will negate the entry and the scan will continue.

AUTOMATIC LINEAR SCAN

Activating and releasing the switch will cause the Message Key LEDs to scan left-to-right, top-to-bottom. When activated again, the scan will stop and the message will be spoken after the Delay Time.

Activating and releasing the switch during the Delay Time period will negate the entry and the scan will start over from the beginning.

ROW / COLUMN SCAN

Activating and releasing the switch will cause the Message Key LEDs to scan one row at a time, top-to-bottom. When activated again, the Message Key LEDs will scan one column at a time, left-to-right. When activated again, the scan will stop and the message will be spoken after the Delay Time.

Activating and releasing the switch during the Delay Time period will negate the entry and the scan will start over from the top.

