

This tip sheet has been developed to assist you with programming Environmental Control on compatible Zytec devices with GEWA ECU modules.

There is also a good introductory webinar on the Smartbox website:

[Introducing Environment control](#)

<https://www.youtube.com/watch?v=kQal9ydRxgl&t=13s>

After following the instructions contained here to set up your accessories (e.g. Television) they can be controlled by preconfigured environmental control grids such as those found in Fast Talker 3, Symbol Talker C & D, and Servus without any further configuration.

Step 1:

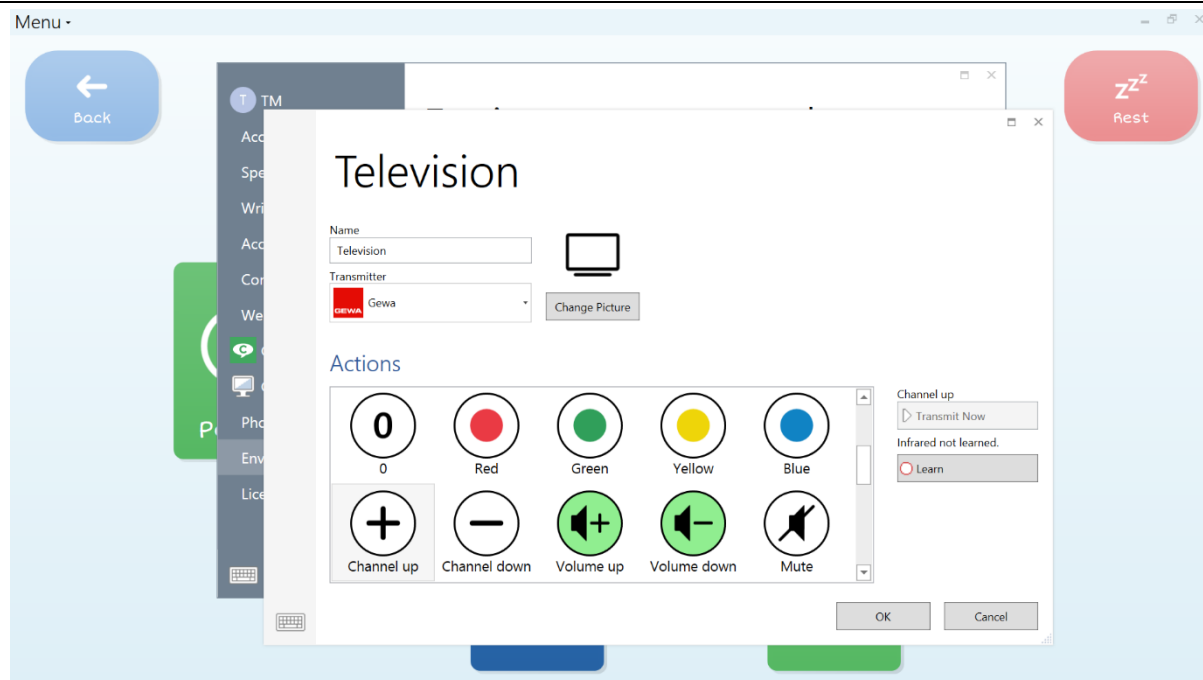
Setting up Grid 3 to Control a Television

Before you start make sure you have your TV's original remote control available, with fully charged batteries.

In Grid 3, navigate to **Menu** → **Settings** → **Environment Control**.

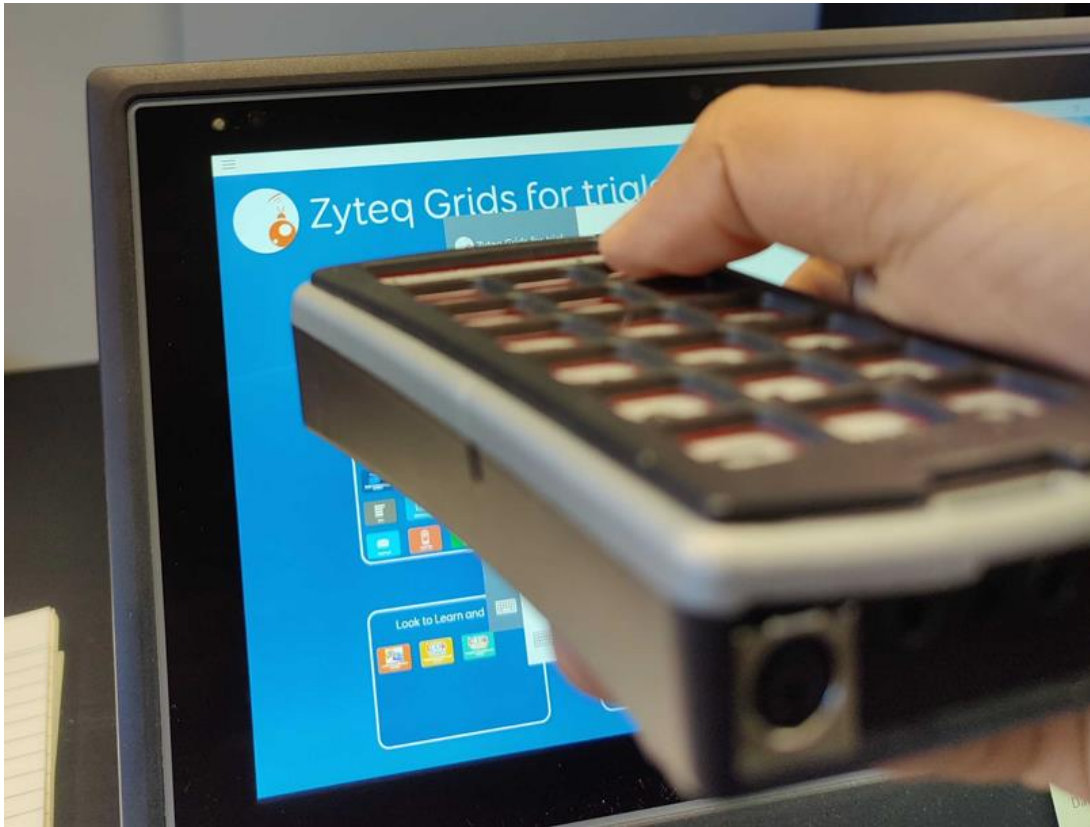
Under **Accessories**, click **Add**, then **Television** and **Next**.

Under **Transmitter**, choose **GEWA**.



Step 2:

Select the first button you would like to program (e.g. Power) and then select Learn



Hold your original remote approx. 3-5cm from the Infra-red learning window (TOP LEFT of the device - you will see a white light when in learning mode) and follow the on-screen instructions – you will be asked to hold down the button on the remote, then release, then a short press and release. Once the code has been successfully learned, the button will turn green. Repeat for all desired functions, then click **OK**.

Now navigate to the TV page within your gridset (eg Servus) and test.

You can repeat this process to add additional accessories.

For further instructions, please refer to specific manuals, located with your device, or book a phone consultation as needed at <http://www.zyteq.com.au/services/phone-consultation>

