

## IntelliGaze Version 4

---

This guide outlines the most commonly used functions and settings for the IntelliGaze IG-30 with IntelliGaze Version 4 software. It can be used in conjunction with any Zytec IntelliGaze devices including:

- Grid Pad 12 with Alea Intelligaze
- Grid Pad 15 with Alea Intelligaze
- IntelliGaze kits

Please refer to your device's individual quick start guide for functions such as turning on and off, environmental control and other connections.

---

IntelliGaze Version 4 has three modes of operation to suit a range of users:

1. **Assisted Mode** - for beginning eye gaze users (for example using Look to Learn software)
  2. **Communication Mode** - for communication and computer access using the Grid 3 or Mind Express software
  3. **Full Access Mode** - for communication and / or computer access with either:
    - a simplified and easy to access Application Centre or
    - the traditional Windows desktop
- 

**NB:** IntelliGaze can be purchased with various software configurations (please see the Zytec website for more information: [http://www.zytec.com.au/products/eye\\_gaze](http://www.zytec.com.au/products/eye_gaze)). Depending on what modes were purchased with the IntelliGaze camera, not all of the modes may be accessible.



## IntelliGaze Operation Centre

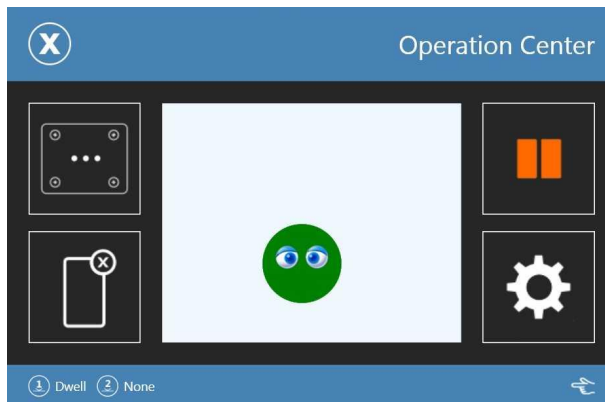
For early learners who are just starting to use the eye gaze technology, we recommend

Start IntelliGaze by double tapping this icon on the desktop.

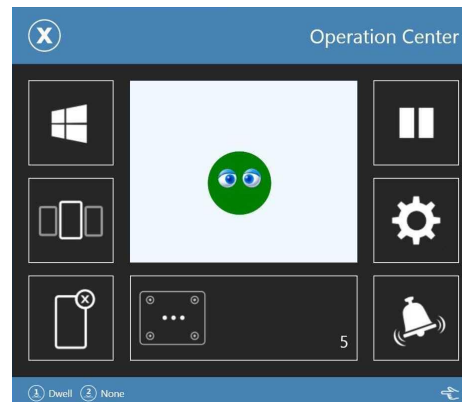


This will start the IntelliGaze camera and software. The Operation Centre will appear. The Operation Centre is designed to give easy access for support people when using assisted mode, whilst providing both gaze and touch access to functions in both Safe and Full Access Mode. You can return to the Operation Centre at any time by holding your finger on the screen until the Operation Centre appears (the timing is customisable) or if using eye gaze by looking up and then slightly above the screen.

*The operation centre looks different depending on which mode you are using.*



Assisted Mode



Safe Mode / Full Access Mode

The operation centre also displays the status monitor which shows when a good position has been achieved.

A green face in the middle of the square indicates a good position for eye gaze has been achieved. A yellow face indicates an okay positioning, a red face indicates poor positioning, whilst a cross means the camera is not able to locate the eyes of the person using the device.

A good eye gaze position is generally obtained when the person is approximately 60cm from the screen with their face parallel to the screen and the top of the head in line (approximately) with the top of the screen. The best position may be slightly different and may differ according to the screen size.

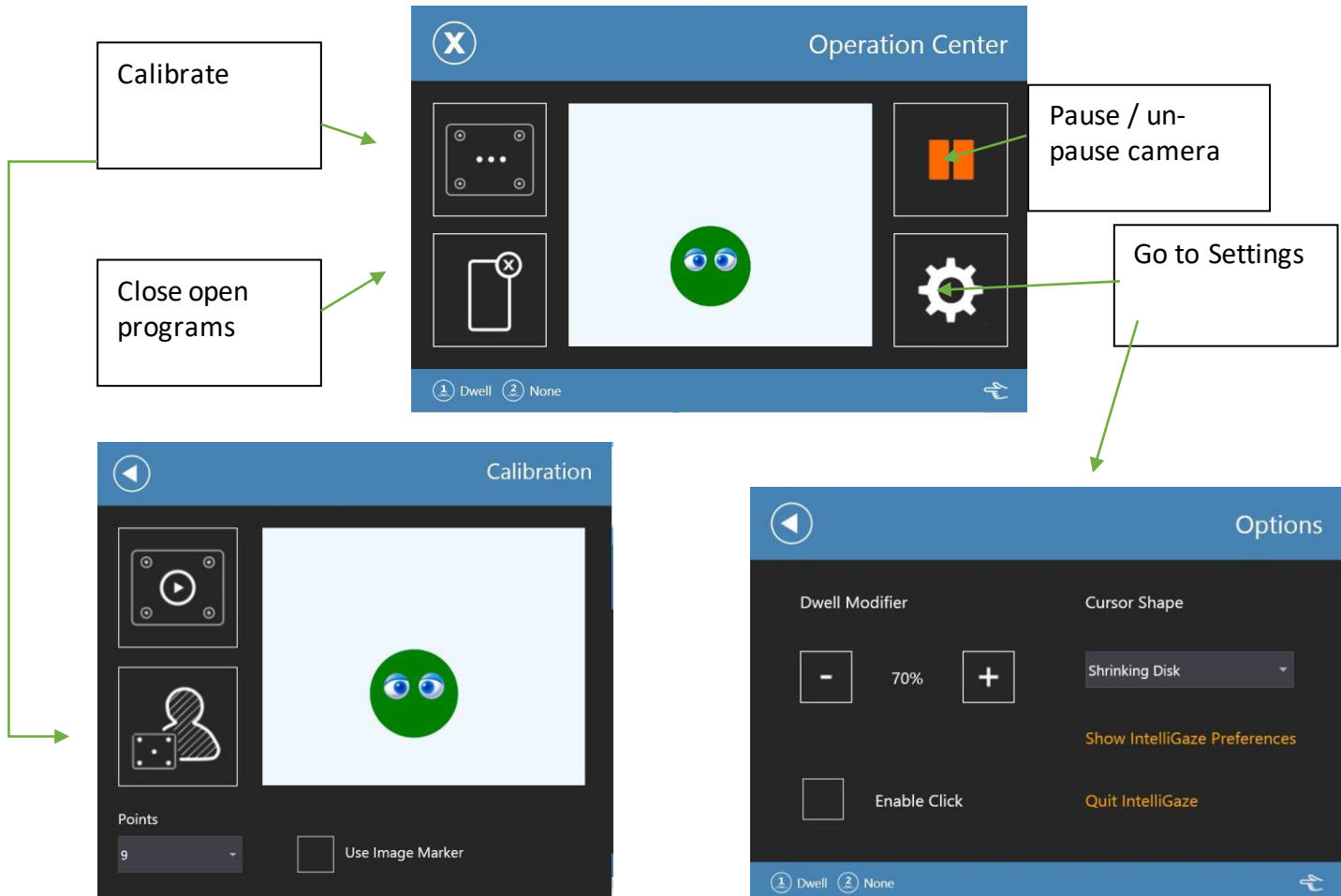
If you touch the status monitor, you can toggle between the coloured face and a video feed. The coloured face is recommended for more accurate positioning, whilst the video feed can help when a person is wearing glasses, or it is difficult to achieve a good position.



## Assisted Mode

For early learners who are just starting to use the eye gaze technology, we recommend using Assisted Mode – this will allow a support person to assist the person use the eye gaze by starting applications for them and allowing easy access to settings.

The camera will start ‘paused’ as indicated by the red pause icon. This will allow you to easily use the touch screen or mouse.



Once you have configured the settings you can start Look to Learn. When you are ready to use the camera tap the pause icon to start gaze control.

**HINT:** It is not necessary to calibrate for early learners or people just starting with eye gaze. A good tip is to use the ‘default calibration’ or for a support person to calibrate and for the person to use that calibration.



## Communication Mode

If you will be using the Grid or Mind Express software, you will need to configure this software for use with the IntelliGaze camera.

If your device has this software installed, you will have been given a guide for configuring this software correctly. Please refer to this guide for further instructions.

NOTE: you can use your communication software in conjunction with other modes of the IntelliGaze.

## Safe Access and Full Access

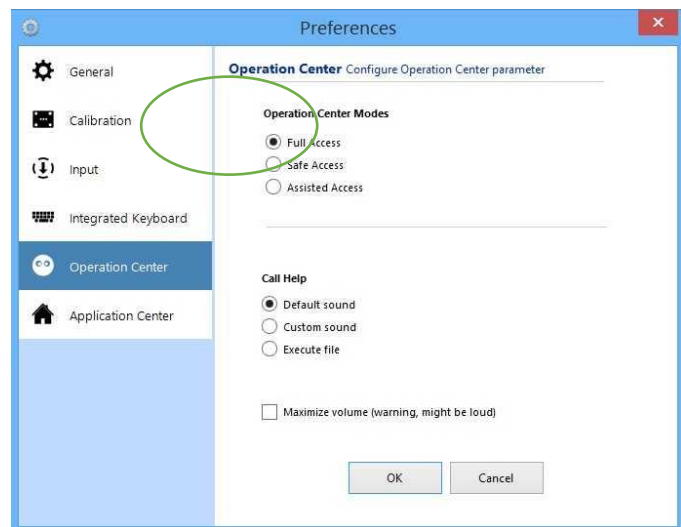
The IntelliGaze hardware and software allow for complete control of Microsoft Windows and other installed programs.

You can choose to use the Windows desktop as your start page and to launch programs or you can use the simplified and purpose designed Alea Application Centre.

To enable to Application centre you will need to right click on the Alea icon in the windows desktop tray and then select Operation centre from the menu. Select Safe Mode and select okay.

You may also need to add programs to the application centre. Some commonly used programs such as the Grid 2 and Look to Learn may have already been completed for you.

For more information on adding programs to the application centre please refer to the Alea manual.



If you would prefer to use the full Windows desktop then you should select Full Access in the Operation Centre tab in the Alea preferences.



When in either Full Access or Safe Access mode the Operation Centre will appear like this:

