

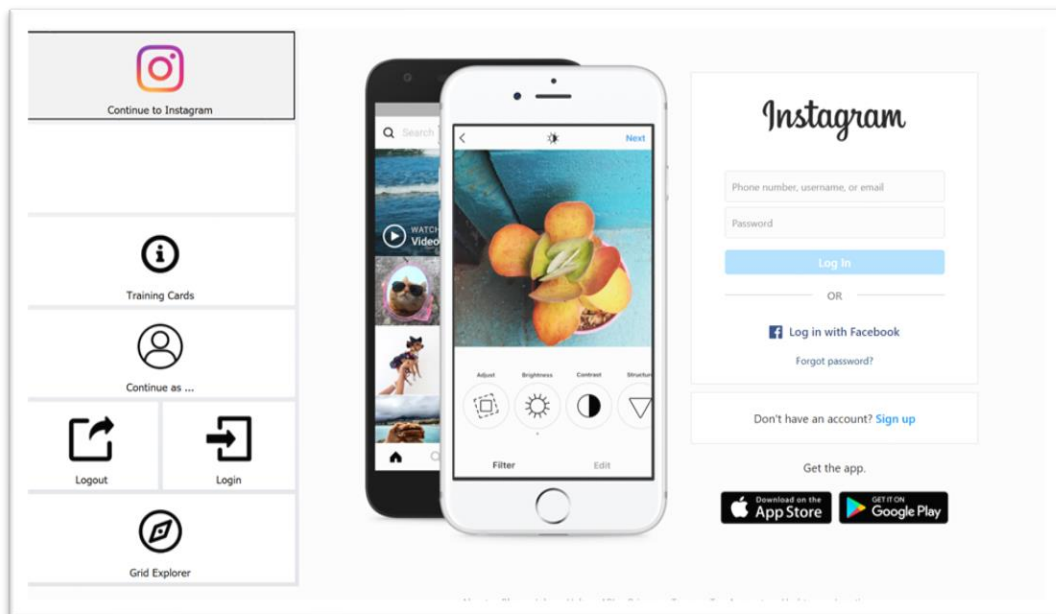


Digital life made easy

# Join-In for Grid 3

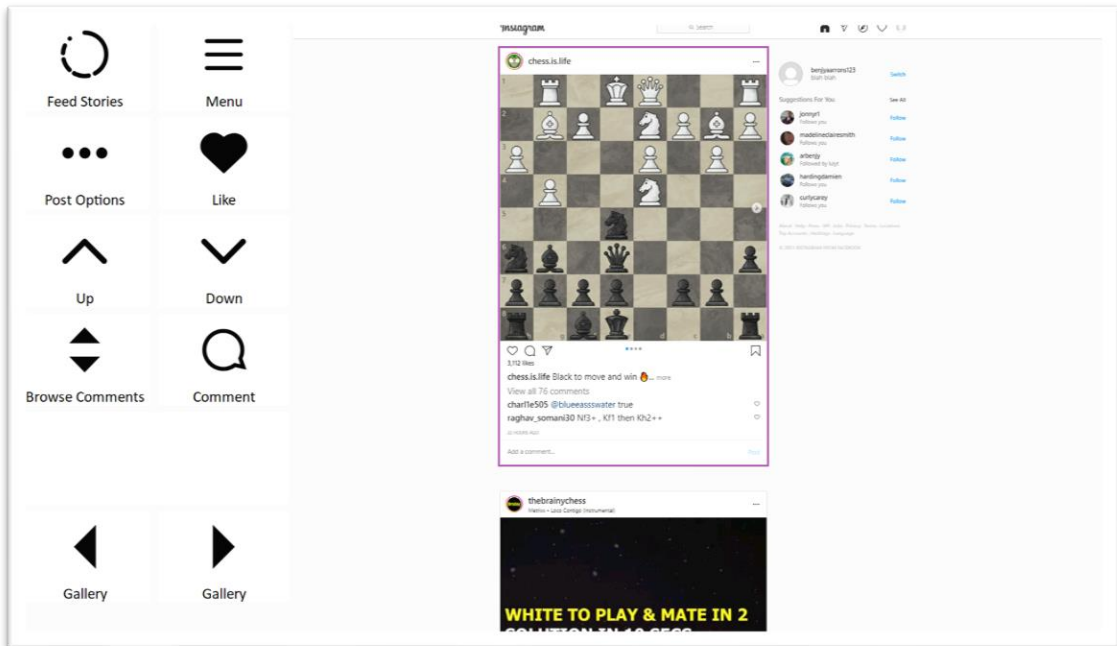
## Instagram





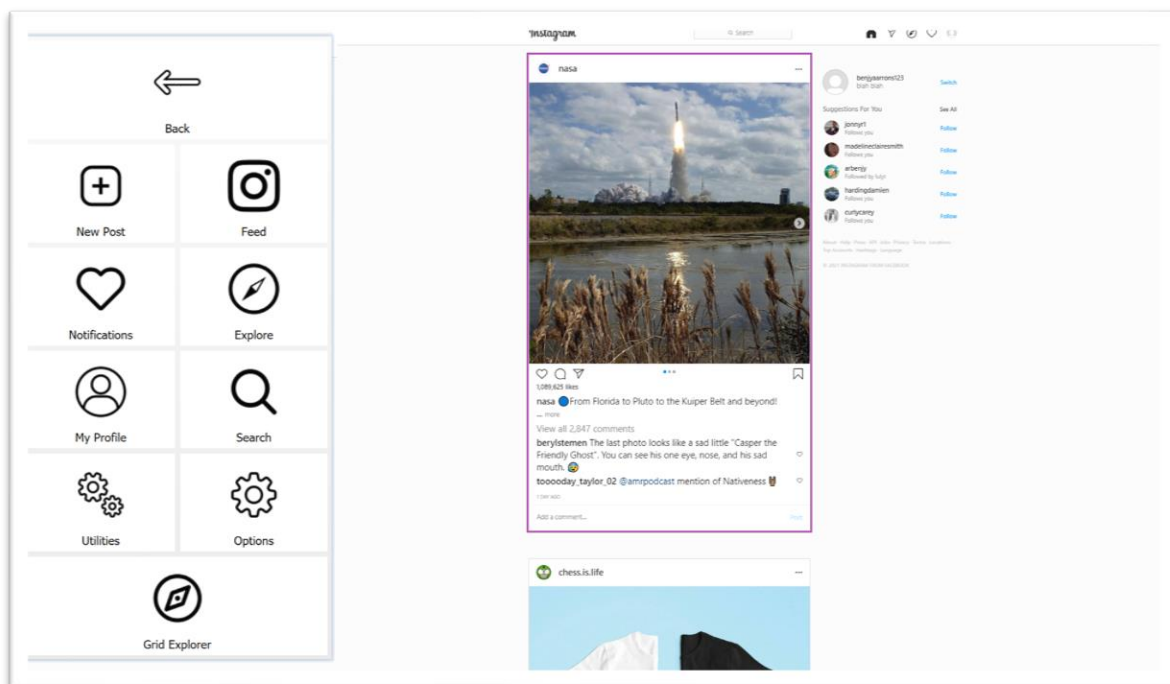
## Getting Started

- **Requirements** – to use Join-In Instagram you need an Instagram or a Facebook account. If you use Instagram with your Facebook account, make sure you log-in to Facebook, using Join-In Facebook. Otherwise make sure you have your login and password available.
- **Login** – After selecting **Join-In Instagram** from your Grid 3 Grid Explorer, follow the sequence – **Login and Info** => **Log In** => **Username** => enter your Instagram account username => **Password** => enter your Instagram account password => **Log In**.
- You are now logged in to Instagram. Select **Continue to Instagram** to start using the app
- You can also reach the login controls via **Menu** => **Options** => **Log In** if you are already in the main part of the app.
- Join-In Gridsets are available in different languages and optimized for use with different input devices. For most apps there is also a regular 'Full' version and a 'Lite' version with larger buttons and almost identical functionality. Please refer to the Join-In for Grid 3 [Getting Started](#) guide for information on how to download the Gridsets that are best for you.



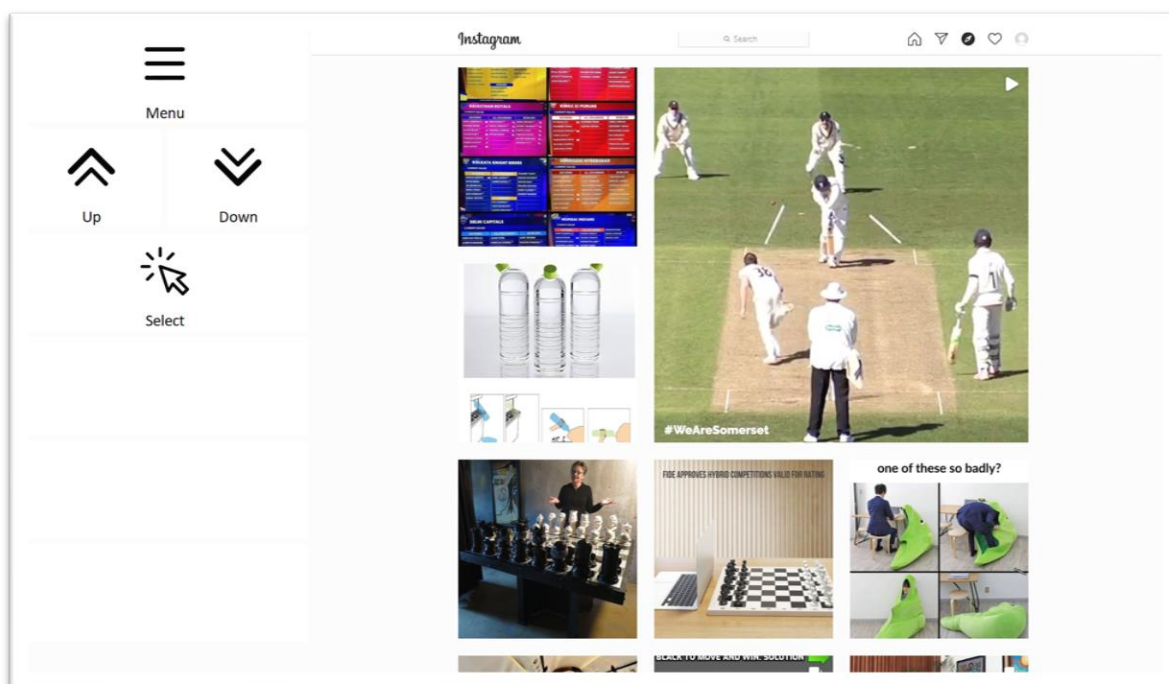
## Feed Page

- The **Feed** page on Instagram shows a scrollable collection of posts from accounts that you follow. This is the home page of Instagram and it is the page you land on when on first open the app.
- **Menu** – takes you to the main menu for Join-In Instagram and allows you to navigate to other parts of the site.
- **Up / Down** – a border frame shows which post is currently selected. Navigate up or down to select different posts using these buttons.
- **Like** – like the selected post.
- **Comment** – write a comment or send an emoji to the selected post.
- **Browse Comments** – see and interact with all comments on the selected post
- **Post Options** – access more actions for the selected post, including; go to the account page of the **Post Author**, **Follow / Unfollow** the account, **Go to Location** of the post, **View Hashtags** to explore related content, and **Save** the post to your **Profile** page.
- Some of the buttons can only be used on certain types of post. **Play/Pause** can only be used on a video post, while the **Gallery** buttons allow you to scroll left and right on sliding gallery posts.
- **Stories** – view the **Stories** posts on your feed page.



## Menu

- **Back** – returns you to the page you were previously viewing.
- **Feed** – takes you to the **Feed** page.
- **Explore** – see a collection of posts from a range of accounts based on Instagram’s recommendations.
- **My Profile** – go to your own **Profile** page. From here you can see all of your own **Posts**, as well as posts by other people that you have **Saved** or been **Tagged** in.
- **Search** – search for **Accounts** to follow or **Hashtags** to explore.
- **Notifications** – see notifications when other users interact with your account.
- **Utilities** – **Recover** or reopen Instagram, **Block Touch** or **Allow Touch** access, close windows you do not need, close popup messages, zoom in or zoom out...
- **Options** – change the computer volume, toggle text enlargement and set text size, turn on auto-read for comments, login and logout of Instagram, and open the [Join-In Settings](#) app.
- **Grid Explorer** – exit Join-In Instagram.

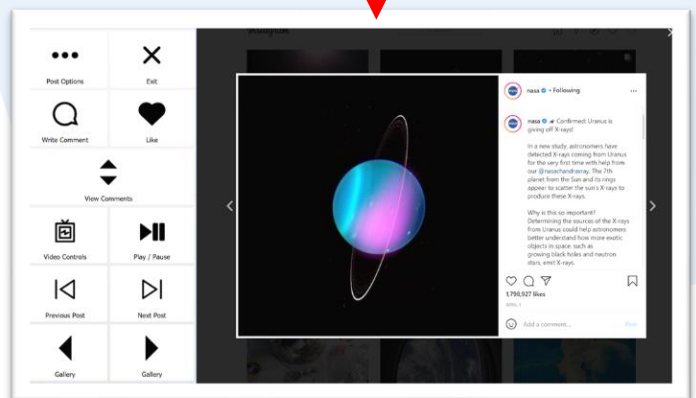
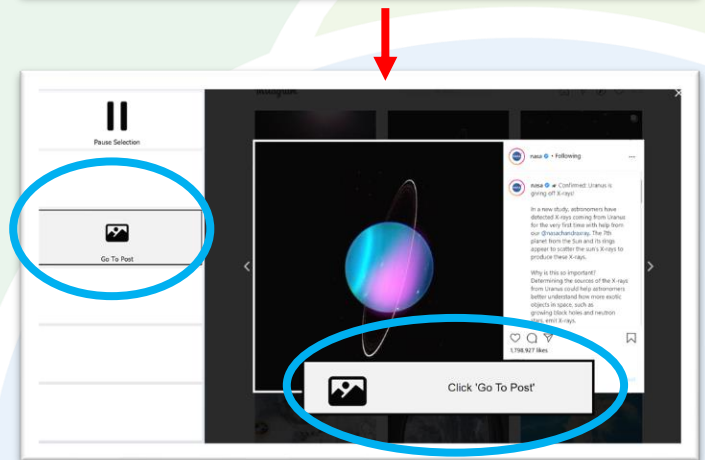
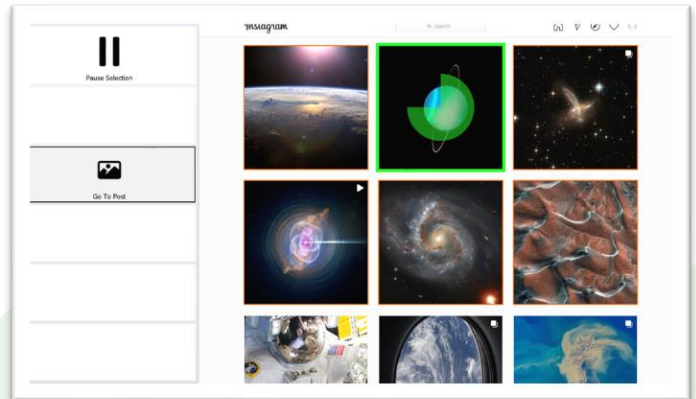


## Explore

- Explore posts from a range of accounts recommended by Instagram.
- The Instagram website contains many other 'explorer' style pages that look a bit like the **Explore** page shown in this picture. An explorer page on Instagram consists of many rows of selectable posts that can be opened and scrolled through. The buttons you see on these pages will depend on what part of the site you are visiting and the accessibility settings you are using.
- As well as the **Explore** page, your own **Profile** page, **Hashtag** pages and other user **Account** pages are all explorer page on Instagram and they all work the same way.
- **Top Row** – will always contain a link to the **Menu**, and sometimes another button for navigating to other sections on the same part of the site.
- **Middle Rows** – will contain all the buttons you need to be able to navigate between all the posts on the explorer page and select one to open up in the **Open Post Viewer**. The buttons you see here depend on which control method your Gridset is optimized for; **Switch**, **Eye Gaze**, **Touch** or **Mouse Dwell**. Consult the [Join-In Settings](#) training cards for more information on how different versions of Join-In Gridsets work in situations like this. Some users will see a **Redirect Message** after opening a post – see [Page 6](#).
- **Bottom Row** – this row contains additional features or options if any are available. Examples include; **Follow Account**, **View Hashtags**, **Follow Hashtag**, etc.

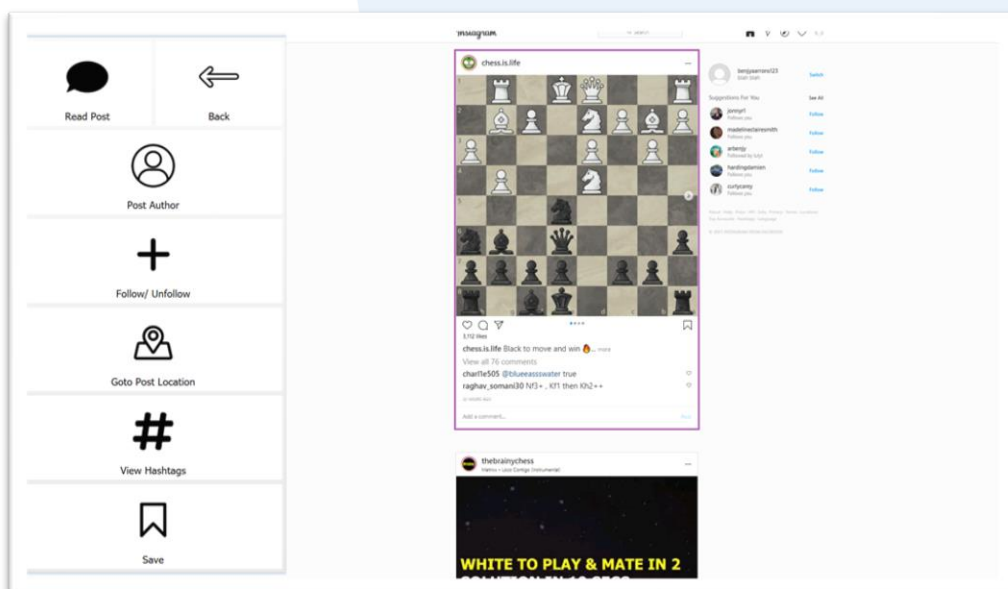
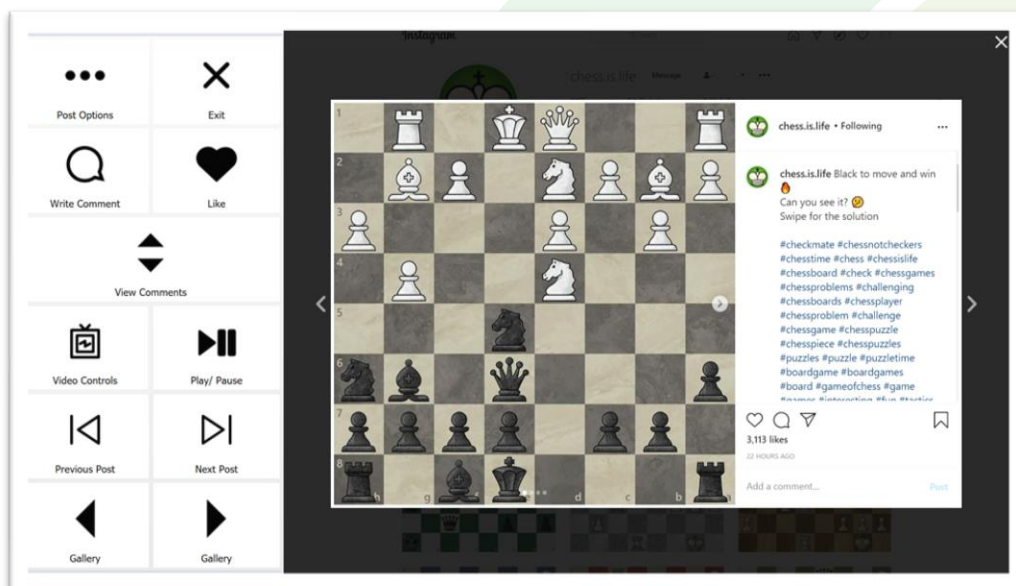
# Redirect Messages

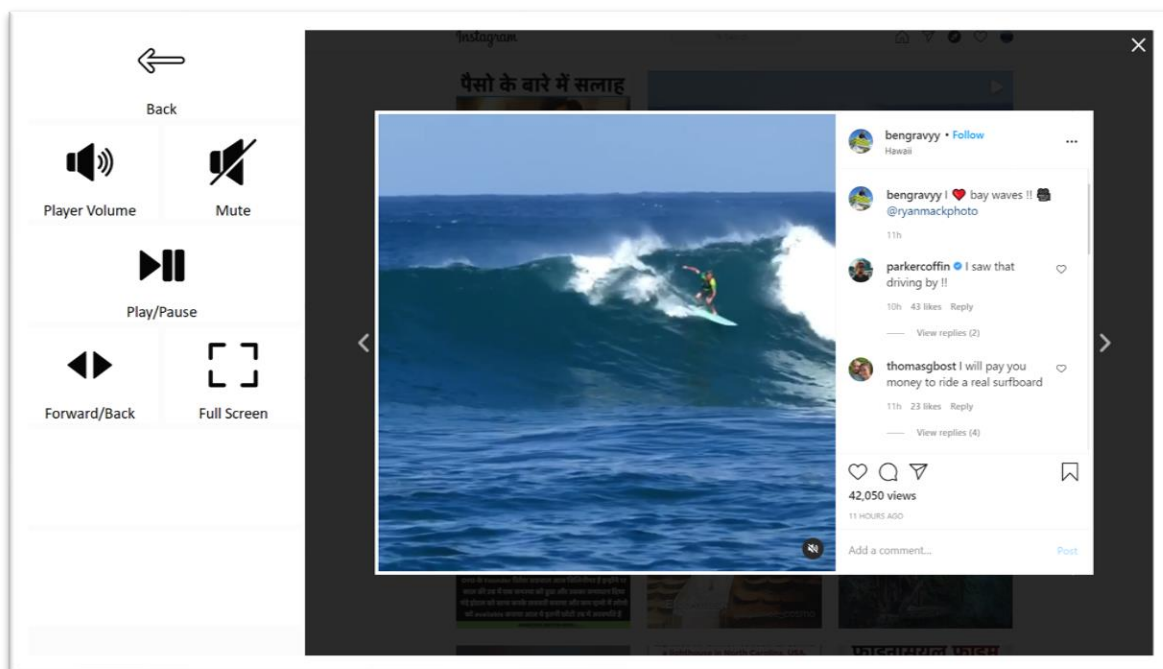
- If you are using the **Eye Gaze**, **Touch** or **Mouse Dwell** optimized versions of Join-In Instagram, you will see a popup **Redirect Message** appear at the bottom of the page after opening a post from an explorer page or making a selection in a popup table.
- When you see this message, click the **Redirect Button** (e.g. **Go To Post**) to redirect to the page you need.
- Redirect Buttons appear in different colors to the main theme. This is to emphasise that they are expected to work alongside a popup message. Always check for a message before clicking a button with different colors.



# Open Post Viewer

- When you open a post from an explorer page you are able to perform all the same actions on it that are available for selected posts on the **Feed** page.
- Scroll with **Previous Post** and **Next Post**, then **Like**, **Comment** or **Browse Comments**. **Play / Pause** and **Video Controls** will only work on a video post, and **Gallery** buttons can only be used on a sliding gallery post.
- **Post Options** – access more actions for the selected post, including; go to the account page of the **Post Author**, **Follow / Unfollow** the account, **Go to Post Location**, **View Hashtags** to explore related content, and **Save** the post to the saved posts on your **Profile** page.





## Video Controls

- **Player Volume** – controls for adjusting the volume of Instagram videos only. Your device volume is not affected, and you may need to adjust this too. Access device volume via **Menu => Options**.
- **Mute** – mute / unmute video volume.
- **Play / Pause** – start or stop the video playing.
- **Forward / Back** – fast forward and rewind controls, as well as **Bookmarks** for jumping to different parts of the video.
- **Full Screen** – view your video at full size with Join-In [Full Screen Video Player](#).