

For computers that have a webcam installed The Grid 2 can be set up to take photos using software called AMCap. AMCap can be downloaded as a free trial or purchased from <http://noeld.com/programs.asp?cat=video>

There is a grid set called '**AMCap Webcam**' available from Sensory Software Online Grids <https://grids.sensorysoftware.com/en/adam-waits/amcap-webcam> . This grid set can be used to control the AMCap software and therefore the webcam from within the Grid 2.

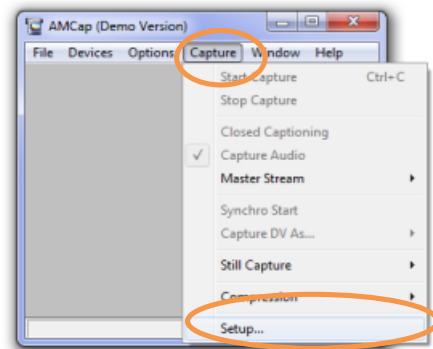
### Download and Install AMCap

1. Go to <http://noeld.com/programs.asp?cat=video> and click on Download to begin downloading AMCAP.
2. Open the file AMCapSetup.exe. When prompted select **YES** to continue with the installation. Follow the prompts to install the software.

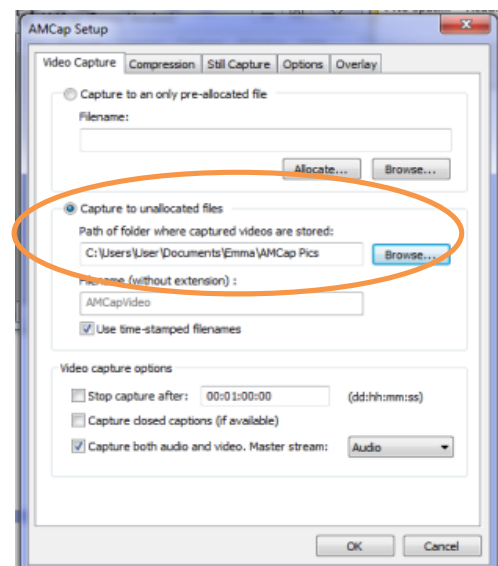
### Configure AMCap – Change the location where photos are saved

By default AMCap saves the pictures taken to the desktop. Usually it is more convenient if the pictures are stored in a file.

1. Start by creating the new folder you want the photos to be saved to in Windows Explorer.
2. In AMCap select **Capture** and then **Setup....**

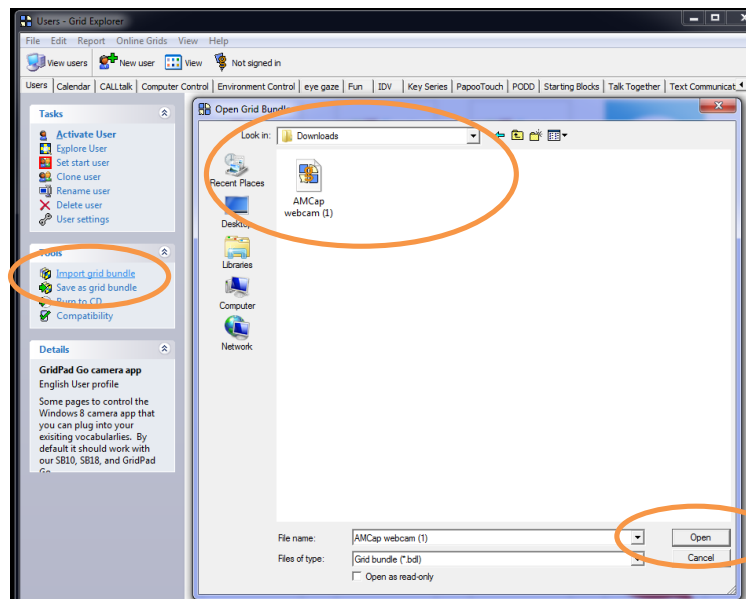


3. In Capture to unallocated files select **Browse...** and navigate to the folder where you want the photos to be saved. In this example they are saved in a Folder called **AMCap Pics** in Documents.
4. AMCap is now installed and configured for use with The Grid 2.

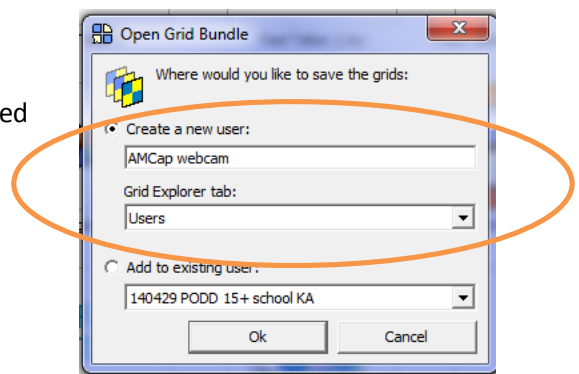


## Download and install the Grid Bundle

1. Go to <https://grids.sensorysoftware.com/en/adam-waits/amcap-webcam> and download the Grid bundle.
2. Open The Grid 2 and **select Import grid bundle**. In the pop up window navigate to where you downloaded the bundle to and select to open the file.



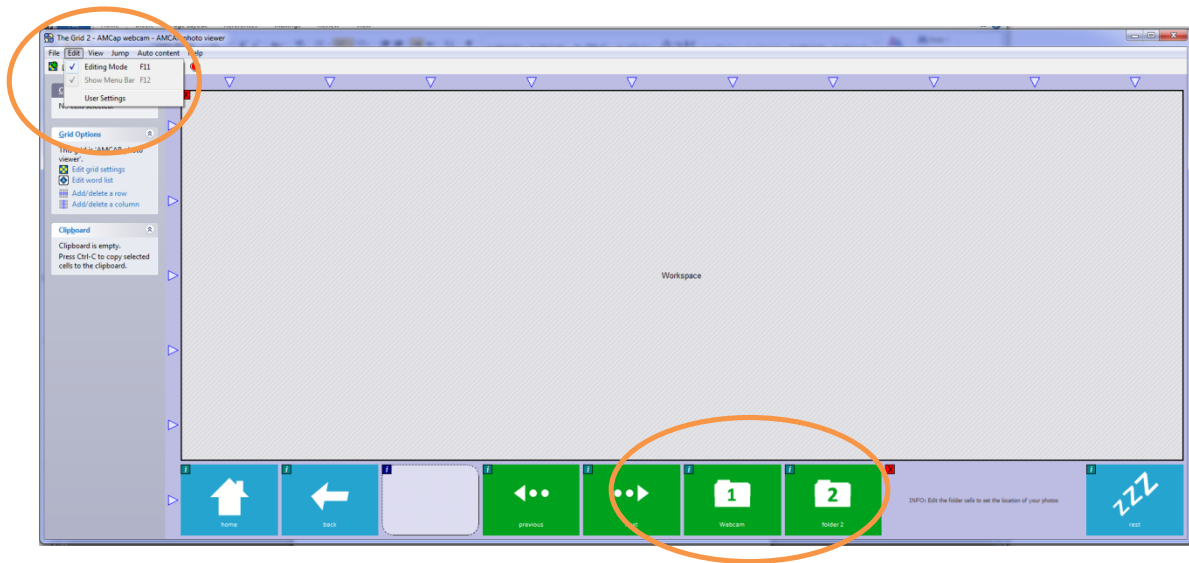
3. Select where you would like the grid bundle to be saved to.



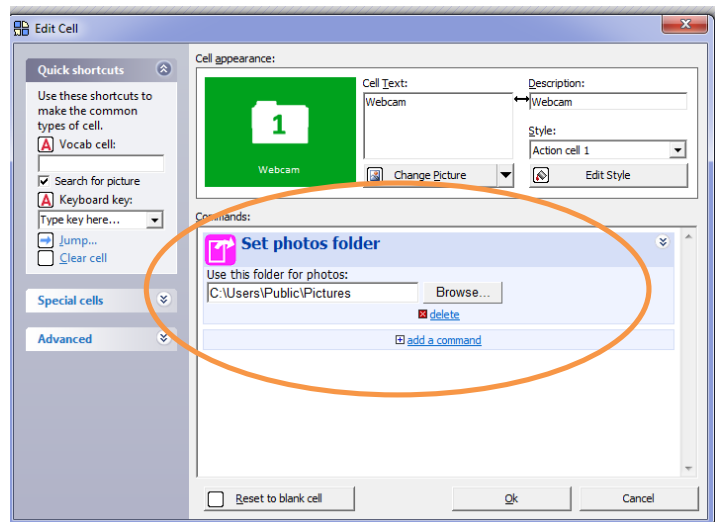
## Configuring The Grid 2 to use AMCap

1. Open the AMCap grid bundle from the Grid Explorer.
2. On the home page you will see that there is a button called photo viewer click on this button to jump to the photo viewer page. On the photo viewer page you need to edit the folders for the photos to match where you have set AMCap to save the photos.

- Go into editing mode by selecting **Edit > Editing Mode**. Double click on the cell folder 1 or 2 to edit the cell.



- Edit the Set photos folder location by clicking on **Browse** and navigating to the same folder that you selected in the AMCap software.



- The AMCap grid set is now ready to be used.

## Using AMCap to take photos

When you open the AMCap grid bundle it will open to a strip at the side of the computer.

